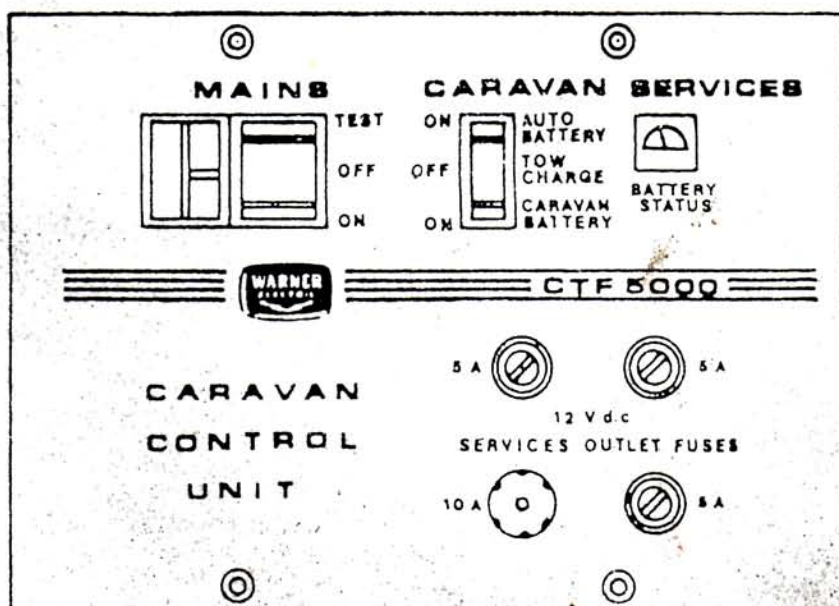




Caravan Control Unit CTF 5000



FLUSH MOUNTING FACIA

Warner Electric Features:

- * Battery Charging From Mains (Auxilliary battery if fitted)
- * Fused D.C. Outlets
- * Mains Integrity Test
- * Battery Status Indication
- * Automatic Charging Overload Trip
- * Double Pole Mains Switch
- * 2M Mains Cable

Warner Electric Technical:

- * Capable of 4A Continuous Charge
- * 3 @ 5 Amps + 1 @ 10 Amps
- * Red And Green Neon Indication
- * Auto Or Caravan Battery Selection
- * Monitors Transformer Temperature
- * Amber Neon Indication
- * Line + Neutral + Earth

Your Richard Holdsworth Motor Caravan is fitted with a Warner Caravan Control Unit to provide a number of functions when on a caravan site provided with a 220/240 volt mains hook-up. On such a site, and with 220/240 volt fed into your exterior Richard Holdsworth plug, the Warner Control Unit will operate your motor caravan 12 volt electrical fittings (lights and water pump) and it also provides 220/240 volt supply on your three pin plug. You also have the option of installing a second battery and the Warner Control Unit can be wired so that this battery is charged when on site.

OPERATING INSTRUCTIONSMAINS SWITCH**Test**

- The momentary test position operates the Red and Green neons as follows :-

Green

- Only - Supply connections correctly polarized and each connection made - proceed to 'on' position.

Red

- Only - Live and neutral connections reversed - reverse Caravan plug or wiring and retest.

Red & Green

- NO earth connection - check earth integrity.

DO NOT proceed to 'on' position until Green neon only condition.

On

- Indicated by Amber neon.

The caravan/auxiliary battery is now being charged direct from mains.

Charge rate dependent upon battery condition.

CTF5000 is capable of 10 amp initial charge
& 4 amp continuous charge.

The charger is protected by an automatic thermal trip which will open and switch off the charger should it overheat.

Resetting will be automatic once the Transformer has cooled sufficiently.

/Continued...

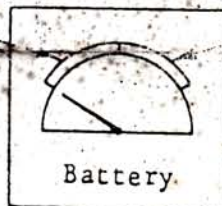
OPERATING INSTRUCTIONS CONTINUEDService Switch Position

- Auto Battery - Selects the auto battery to supply the Caravan Services.
- Off/Tow Charge - Switches the service loads off and is the switch position used when tow charging the Auxiliary/Caravan Battery.
- Caravan Battery - Selects the Caravan/Auxiliary Battery to supply the Caravan Services.

Battery Status

- Indicates with the service switch in Auto and Caravan Battery positions, showing the status of the respective battery.

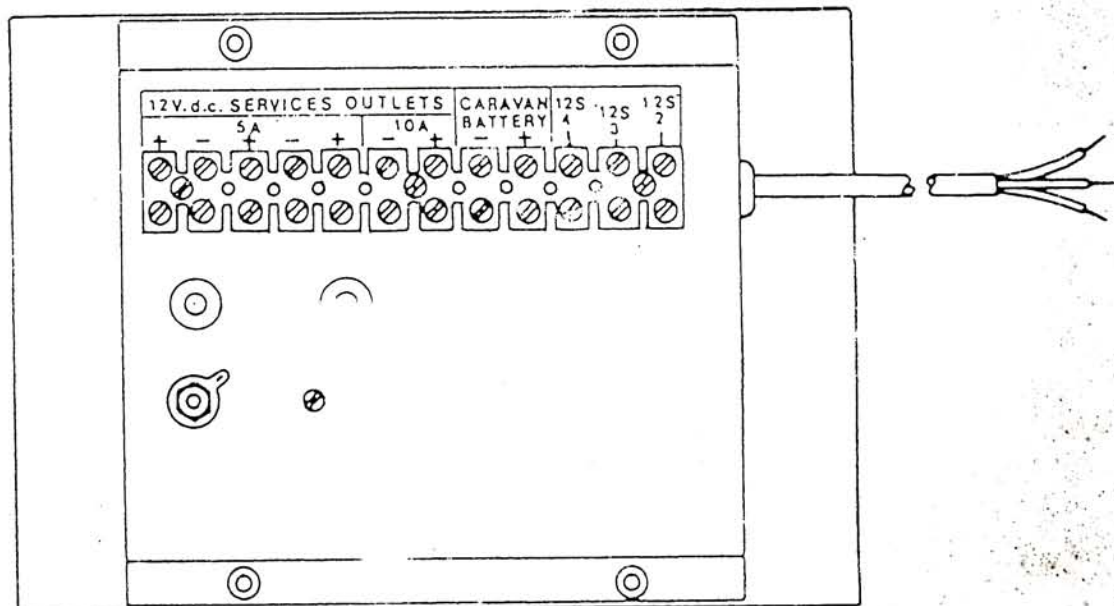
Red -
Battery needs
charging



Green -
Battery
charged

Fuse Details

- 5A - 20x5mm Glass Cartridge
- 10A - 1 1/4" x 1/4" Glass Cartridge



Low Voltage 12V D.C.

- | | | |
|------------------|---|--|
| 5A Fused outlets | - | 3 off - to radio, lights, etc - wiring $.75 \text{ mm}^2$ |
| 10A Fused outlet | - | 1 off - to pump etc. - wiring 1 mm^2 |
| Caravan Battery | - | Direct to caravan/auxiliary battery - wiring 2 mm^2
(A 25 amp fuse should be fitted as close as possible to battery terminal to protect the external wiring). |
| 12S - 4 | - | To terminal (4) on the 12S direct to auto battery +VE terminal. |
| 12S - 3 | - | To terminal (3) on the 12S direct to auto -VE earth. |
| 12S - 2 | - | To terminal (2) on the 12S +VE tow charging feed from auto - Wiring 2 mm^2 .
Although this unit includes a blocking diode for two charging, a split charging relay (Lucas 7RA or SIM) is recommended for total battery isolation. |

IMPORTANT POINTS

DO NOT fit any extra lights or accessories unless you fit an Auxiliary Battery.

- ** If fuse blows CHECK FOR FAULTS before replacing.
- ** DO NOT use fuses of higher rating than those specified.
- ** DO NOT connect a fridge to the CTF5000.